

Aware2All Face-to-Face meetings

Moulon building ("Digiteo") of the IRT SystemX

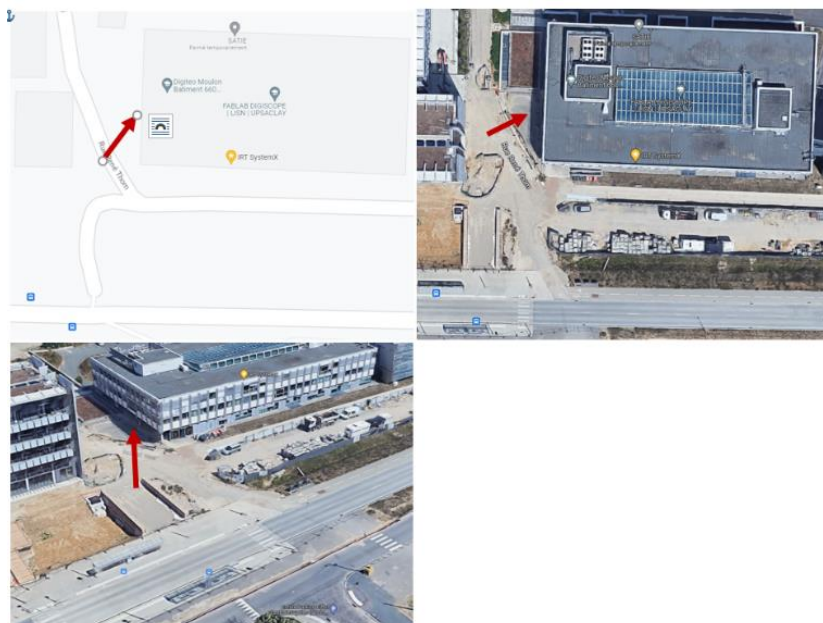
Public transport & accommodation

The face-to-face meetings of the Aware2All project will be held on the secondary site of IRT SystemX, on the Moulon campus: [Google map](#)

Address: Bâtiment 660 DIGITEO, Rue Noetzlin, 91190 Gif-sur-Yvette



Entry to the building **on foot** is on the West side, as shown below. There is a **car park** on the North side of the building.



Transportation to the Moulon campus

From Massy-Palaiseau train station :

- Take **bus 91.06** towards Christ de Saclay and get off at *Moulon*. The building will be behind you.
- Take **bus 91.10** towards Christ de Saclay or Gare de Saint Quentin and get off at *Moulon*. The building will be behind you.

From Campanile Paris-Saclay hotel:

- Cross the rue Joliot Curie, turn left. Walk along the side of the Eiffel building. Turn right on the big square. Walk along the front of the Eiffel building. Cross the Avenue des Sciences. The Moulon building is in front of you.

From Roissy airport

Take RER B towards Saint Rémy-les-Chevreuse or Massy-Palaiseau. Get off the train at *Massy-Palaiseau*. Then, take the 91-06 or 91-10 bus (see above).

From Paris to Massy Gare TGV

To get to Massy Gare TGV which then offers a bus connexion to the *Moulon campus*, you must take the RER B (blue train line) from Paris. The RER B connects Roissy airport to Paris and then on to Massy TGV and Orly airport. Take RER B towards Orsay Ville or Saint Rémy-les-Chevreuse. Then take the 91-06 or 91-10 bus (see above).

You can catch the RER B train from the following stations in Paris:

- | | |
|---------------------------|----------------------|
| - Paris Gare du Nord | - Luxembourg |
| - Châtelet les Halles | - Denfert-Rochereau |
| - Saint Michel Notre Dame | - Cité Universitaire |

From Orly airport to the Moulon campus

Take the Orlyval train to *Antony*.

Get off at *Antony* train station and take RER B towards Orsay Ville or Saint Rémy-les-Chevreuse and get off the train at *Massy-Palaiseau*. Then, take the 91-06 or 91-10 bus (see above).

Please note: You need to buy separate tickets for the Orlyval train and the RER train.

Purchasing tickets: You can purchase a single ticket from Roissy airport and Paris to Massy-Palaiseau but will need to purchase a separate ticket for the bus.

Travel information:

[Public Transport in Paris: Everything You Need to Know \(timeout.com\)](#)

[RATP: Public transport in Paris and île-de-France: metro, RER, bus, tramway](#)

Accommodation in the area of the Moulon campus

Please note: We encourage you to book one of the hotels in the areas suggested below. Avoid staying in Paris as this will involve long travel times to the location of the symposium.

Hotels nearest to the Moulon building

2-minute walk to the Moulon building

- **Campanile Paris-Saclay**
9 Ter Rue Joliot Curie, 91190 Gif-sur-Yvette
[Link to hotel website](#)

10-minute bus ride to the Moulon building

- **Aparthotel Adagio access Palaiseau Saclay**
6 Bd Gaspard Monge, 91120 Palaiseau
[Link to hotel website](#)

Suggestions of hotels next to the high-speed train station *Massy-Gare TGV* that has connexions to Orly airport, Paris, and Roissy airport via Paris

Please be aware that there are many accommodation options around the Massy TGV train station. When booking, check that you are not too far from the station as some hotels bear the “Massy TGV” name but are quite a stretch from the station.

30 to 40-minute bus ride to the Moulon campus

- **Hôtel Mercure Paris-Saclay Massy TGV**
21 Av. Carnot, 91300 Massy
[Link to hotel website](#)
- **Hilton Garden Inn Paris-Massy**
35 Av. Carnot, 91300 Massy
[Link to hotel website](#)
- **Séjours & Affaires Massy Atlantis**
6 Rue Christophe Colomb, 91300 Massy
[Link to hotel website](#)